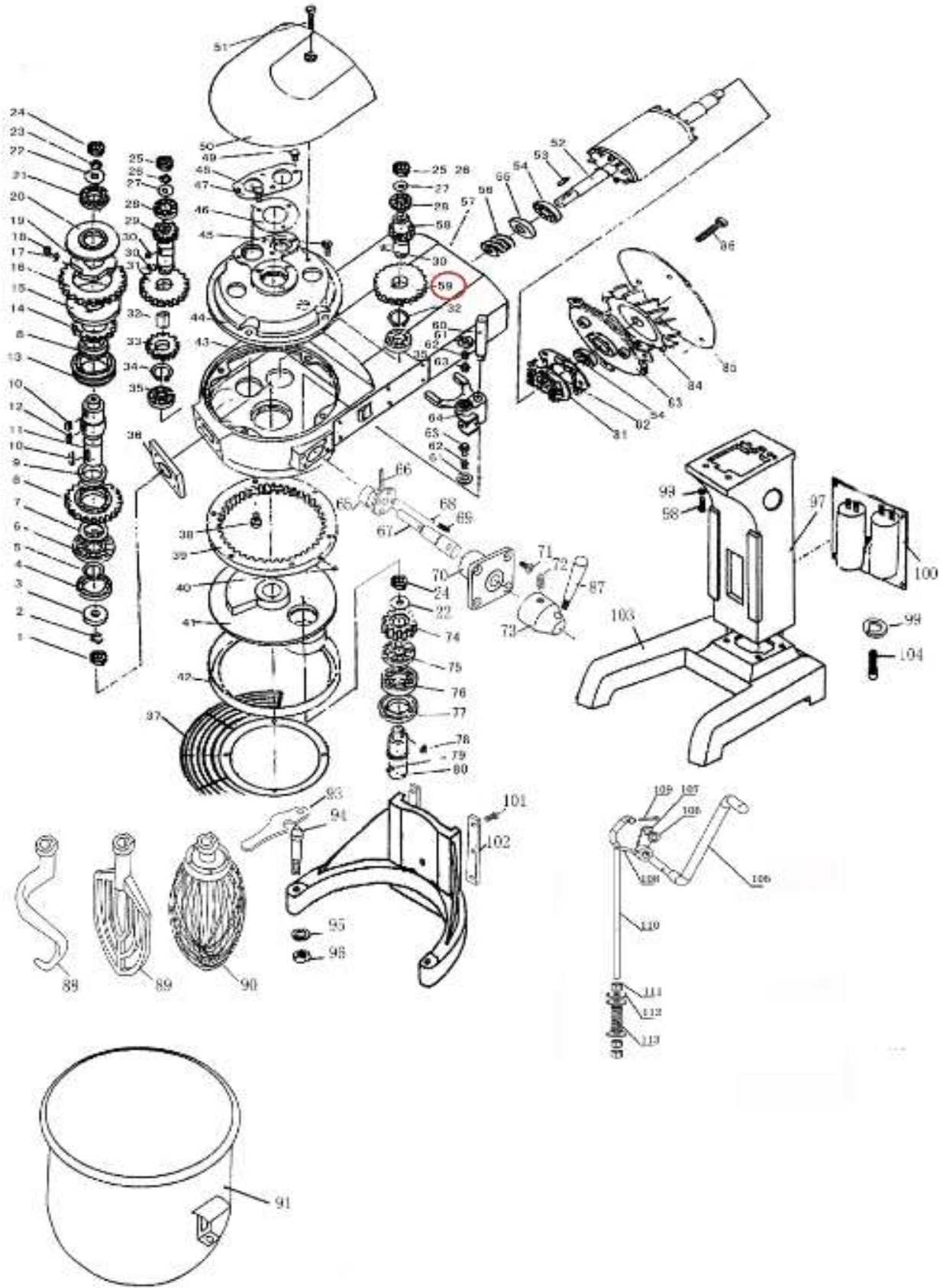


**МИКСЕР ПЛАНЕТАРНЫЙ HURAKAN HKN-IP30FE**




**МИКСЕР ПЛАНЕТАРНЫЙ HURAKAN HKN-IP30FE**

Поз	Наименование детали	Кол			
1	nut	1	60	fork guid bar	1
2	spring washer	1	61	nut	2
3	flat gasket	1	62	spring	2
4	oil seal	1	63	lifting pin	2
5	shaft with spring	1	64	fork	1
6	bearing	1	65	eccentric locking collar	1
7	lower bearing upper sleeve	1	66	round pin	1
8	lower clutch gear	1	67	variable speed spindle	1
9	output shaft gear set	2	68	steel ball	2
10	flat key	2	69	spring	2
11	output shaft	1	70	transmission block	1
12	flat key	2	71	countersunk head screw	4
13	output shaft clutch	1	72	set screw	1
14	upper clutch gear	1	73	handle holder	1
15	ratchet plate(down)	1	74	planet gear	1
16	out ring	1	75	bearing	1
17	roller spring	4	76	bearing	1
18	roller spring	4	77	oil seal	1
19	inside the star wheels	1	78	flat key	1
20	ratchet plate(up)	1	79	taper pin	1
21	bearing	2	80	planet shaft	1
22	flat gasket	2	81	magnetic switch rotor plate	1
23	spring washer	1	82	magenetic switch stator plate	1
24	nut	2	83	axle bearing seat	1
25	nut	2	84	fan blade	1
26	spring washer	2	85	back cover	1
27	plain washer	2	86	half-round head screw	4
28	bearing	4	87	handle	1
29	intermediate bridge axle	1	88	hook	1
30	flat key	3	89	bat	1
31	Intermediate shaft gear(big)	1	90	whisk	1
32	intermediate shaft sleeve	1	91	bowl	1
33	Intermediate shaft gear(small)	1	92	bowl seat	1
34	shaft ring	2	93	bowl lock handle	2
35	bearing	4	94	bowl pin	2
36	front cover	1	95	spring washer	2
37	protection grid	1	96	nut	2
38	hexagon socket cap screw	6	97	stand column	1
39	inside the ring gear	1	98	hexagon socket cap screw	4
40	half-round head screw	4	99	spring washer	4
41	swivel base	1	100	back cover	1
42	protection net block	1	101	outer hexagonal bolts	6
43	tank	1	102	pressure plate	2
44	bearing block	1	103	foot	1
45	hexagon socket cap screw	4	104	outer hexagonal bolts	4
46	Single bearing gland	1	105	lifting handle	1
47	double bearing gland	1	106	flat key	1
48	hexagon socket cap screw	4	107	arm	1
49	half-round head screw	5	108	elastic cylindrical pin	1
50	top cover	1	109	cotter pin	1
51	half-round head screw	1	110	rod	1
52	motor rotor	1	111	hexagon bolt	3
53	flat key	1	112	large flat key	3
54	bearing	2	113	spring	1
55	oil seal	1			
56	worm shaft	1			
57	motor stator	1			
58	input shaft	1			
59	worn gear	1			